

УДК 069.9(520)

**Kazuaki SEKI**

*skkzarc@kanto-gakuin.ac.jp / kaz-seki@wg8.so-net.ne.jp*

KGU, Yokohama, Japan

### **THREE BOOKS, EXHIBITIONS, WORKSHOPS, AND A PROJECT ON THE RECENT ACTIVITIES IN 2018/2019**

*Abstract.* This report includes my recent activities from 2018 and 2019. I have published three books. My first book is entitled “Critical Distance/建築史眼.” It is an anthology of scientific articles and critical essays on art, design, and architecture. My second book is entitled “Prospective Landscapes: A Retrospective.” It is an exhibition catalogue for the drawing exhibition “Vortex” by landscape architect Ryoko Ueyama. Lastly, my third book is entitled “Ten Field Notebooks on Ancient Egyptian Architecture.” It is a reproduction of my field notebooks on ancient Egyptian architecture. I also held three exhibitions and workshops in Yokohama and Hokkaido, respectively. I am currently committed to a project in Higashikawa, Hokkaido.

*Key words:* history and criticism in architecture and design, workshop, publication and exhibition, artists-in-residence, BankART 1929, project at *Higashikawa, Hokkaido*

#### **1. Three books**

##### **1-1. “Critical Distance/建築史眼” (Fig. 1)**

This book is a personal anthology of the scientific articles and critical essays written by the author who is working as a Professor of History and Theory of Architecture and Architectural Design from 1976 to 2019 at the Department of Architecture, Kanto Gakuin University, Yokohama, Japan.

This book contains:

1. Six scientific research articles on ancient Egyptian architecture.
2. Eight essays on garden, urban space, and modernist architecture and preservation.
3. Twelve essays on book review and art and design.
4. Three articles on architectural education.

(Texts are written in Japanese and/or English.)

## **1-2. Exhibition Catalogue of “Prospective Landscapes: A Retrospective” (Fig. 2)**

This book is an exhibition catalogue of “Prospective Landscapes: A Retrospective-Drawing Exhibition ‘Vortex’,” by landscape architect, Ryoko Ueyama, colleagues and collaborators. The exhibition was held in Tokyo in October 2019.

This catalogue contains:

- Ryoko UYAYAMA/Between the Sky and the Earth: The last flight of the Hot-Air Balloon ‘Ubiquitous’
- Prologue: Vortex-Ultimate Existence
- Yutaka HIKOSAKA/Beyond Vortex
- Archives: Cosmophilia
- Ryoko UYAYAMA/In search for a “landscape bridges heaven and earth”
- From the Sky: A new Layer to the Earth
- On the Surface: ADORE to the Surface of the Land
  - From inside of the Earth: Imagination and Respect to the Underground
- Kakugyo S. CHIKU/Ryoko Ueyama Exhibition ‘Vortex’
- Epilogue: Water-Ultimate Beauty
- Kazuaki SEKI/Memory of the place and History of Universe bridge to “the other world”
  - Acknowledgement
  - Profile

Following texts are the authors statement;

*We strongly hope that this exhibition will serve as an opportunity to deepen the mutual understanding on architecture, civil engineering, urban design, and other related fields, although the Architectural Archives exhibition deals with “landscape architecture.” We also hope that the field of landscape architecture becomes accepted by the general people, especially children. With the collaboration open to all fields, we will seed to increase and develop our colleagues. While watching the seeds eventually become a large tree, we would like to present the exhibition and publish this book.*

*The editorial concept of this book is parallel to that of the exhibition to convey the realm of “landscape architecture.” The drawings in the catalogue can be accessible at the Research Institute of Architectural Archives, KIT, which preserves all the original drawings.*

I have also written a critical essay on the works of Ms. Ueyama in “Memory of the place and History of Universe bridge to ‘the other world’”.

## **1-3. “Ten Field Notebooks on Ancient Egyptian Architecture” (Fig. 3)**

This booklet is a reproduction of my field notebooks on the archaeological excavation field works in Malkata, Luxor, Egypt from 1976 to 1988. A total of ten field notebooks from Maruzen Co. are available. Each booklet has a height of 10.5 cm, width of 16 cm, and is covered with fabric. Each page has a light cream-colored paper, and a 4 mm interval grid is printed on it.

This booklet includes six notebooks from December 1976 to January 1981. It also contains one field work for the survey of the architecture “Kom el-Samak: Hill of Fish” at Malkata South and four from November 1985 to January 1988 for the royal palace of Amenhotep III in Malkata.

I have always carried these notebooks in the field site. The pencil-drawn sketches in the field are colored with watercolor, and an additional memo was written when returned to the laboratory in the dormitory.

This booklet is composed of the selection of the pages according to the themes shown in the Table of Contents. All pages are reproduced in the original size.

This booklet contains:

1) Decoration 2) Elements 3) Hieroglyphs 4) Landscape 5) Masonry 6) Museum

## **2. Three Exhibitions**

### **2-1. “Licht Kugel” and “Waku Waku Lantern” in Smart Illumination Yokohama 2018 (Figs. 4 and 5)**

Smart Illumination Yokohama is an international art event that aims to fuse eco-environment technology and art.

This event was held on the beginning of November 2018, the work of “Licht Kugel” and “Waku Waku Lantern” were designed and realized under the term to create temporary structures in the night space along three themes, namely, “luminous,” “moving,” and “floating.”

“Licht Kugel (Luminous Sphere: *Hikaru tama*)” is a one by one scale self-built wooden object with 3.6 m diameter. The visitors can enter into its interior space from “*Nijiri guchi*: small entrance” at the pedestal of 60 cm in height. The slow-circulating light inside the cavity comes outward through the rectangular lumbers.

“Waku Waku Lantern” are three types of lanterns (*Chyochin*) that are made of bamboo skeleton and Japanese paper and/or cloth. Their shapes and construction process are derived from traditional resource. The visitors can enter inside (maximum diameter is 1 m) and walk, move, and wander around *Zou-no-Hana* Park, which is the location of this art event.

### **2-2. Prospect Landscapes: A Retrospective Drawing Exhibition Vortex (Fig. 6)**

“Prospective Landscapes: A Retrospective-Drawing Exhibition ‘Vortex’” by landscape architect Ryoko Ueyama with colleagues and collaborators was exhibited at the Japan Institute of Architects in Tokyo in October 2019.

This exhibition is a commemorative event for the donation of Ms. Ueyama’s original drawings to the JIA-KIT Architectural Archives. Large-size original drawings are spread on the light tables in the Grand Hall of the Architect’s House.

The concept of the exhibition design is to open the realm of landscape architecture.

Following part of the statement in the catalogue clearly indicates its intention.

*Landscape architecture is not only an art of the created space but also an experience art that encompasses time. Thus, conveying its essence in the context of exhibitions, where time and place are limited, is challenging. In the exhibition of “Landscape bridges the heavens and the earth,” we focus not only on the photographs of “finished” works but also on the original hand-drawn images created at various design stages. We also focus on the kind of process and media of presentation that sparked the realization of creative spaces.*

**2-3. “Luminous Jungle Gym” in Smart Illumination Yokohama 2019**  
(Fig. 7)

This event was held on the end of October 2019 to the beginning of November 2019.

In this year, we add a new element of “the light” and recreate “Luminous Jungle Gym”

based on a small building designed to “create a place in the space.” A 4m × 4m × 3m

three-dimensional wooden frame that incorporates terraces at 250 mm intervals provide

the matrix of this structure.

The visitors wear *Happi*, which is traditional simple clothes that are colorfully illuminated by black light, thereby making it appear as metamorphoses during festivals. Visitors can enjoy the beautiful night landscape of the surroundings from the terraces at different levels.

**3. Three Workshops in Higashikawa, Hokkaido**

**3-1. “Photograph and Architecture” in August 2018 (Fig. 8)**

This design workshop event in summer at Higashikawa, Hokkaido aims to give each participant - university students and professionals - the opportunity to exchange ideas within an interactive platform. They can make their own contributions in creating new ideas and updating international cultural heritage while acquainting themselves

with the main cultural features of the participating countries, namely, Russia, Korea, and Japan.

The theme of this workshop focused on thinking about the new possibilities of the relationship between photograph and architecture by designing a house for a photographer. The participants are familiar with the historical and environmental contexts of the place in the course of the program.

**3-2. “Fuyu no Akari: Light in Winter” in February 2019 (Fig. 9)**

The theme of this design workshop that has been held in winter Higashikawa, where landscape changes into white with snow, is “Akari: Light.” Beautiful townscapes at night are created by designing small colorful lighting objects at the entrance of houses. A light is always placed at the entrance of a typical Japanese house. We can feel the warm atmosphere that tells “there are people in the house, so you can come to the guests” to see it. *Akari* connects people.

**3-3. “Tea Room” in September 2019 (Fig. 10)**

The theme of this architectural design workshop in autumn at Higashikawa, Hokkaido, is about “new” architectural ideas and constructing small buildings in a natural environment and not in urban environments, such as a big city (e.g., Tokyo where most of participants are usually living and studying).

The participants are required to design a “Tea Room” within the volume of 3m × 3m × 3m. The site is located in the rice field where an old farmhouse and a storage exist nearby.

What is “tea” for you, what is “tea to drink,” and what is the “Tea Room” in Hokkaido?

Of course, it does not matter if it is Japanese style or not. The tea room might be a self-styled architecture. The idea and design will be presented by 1/10 or 1/20 scale model. The materials of the models must be acquired from the workshop site and its surroundings.

**4. Higashikawa-ni-Go project (Fig. 11)**

The project called “Higashikawa-ni (2: two)-Go” aims to found new facilities for Artist-in-Residence and private Design School at Higashikawa town in Hokkaido.

In this 1800 square meter site, an old house and a storage barn constructed and used by the previous owner still exist. However, the new owner of this place, who is an architect and photographer, thought of renovating the house into a design studio, gallery, and accommodation for visiting artists and designers and various students who are interested in the field of art and design.

Our project team is composed of architects, structural engineer, interior designer, wood craftsman, and photographer. Team members with unique professional knowledge

and skills shall collaborate with one another. The members already have various experiences in workshops, exhibitions, artist-in-residence, especially at BankART 1929 in Yokohama, and have taught international students at universities and professional schools.

To improve this project, I would like to propose Library Barn, Cottage, and Tea Room.

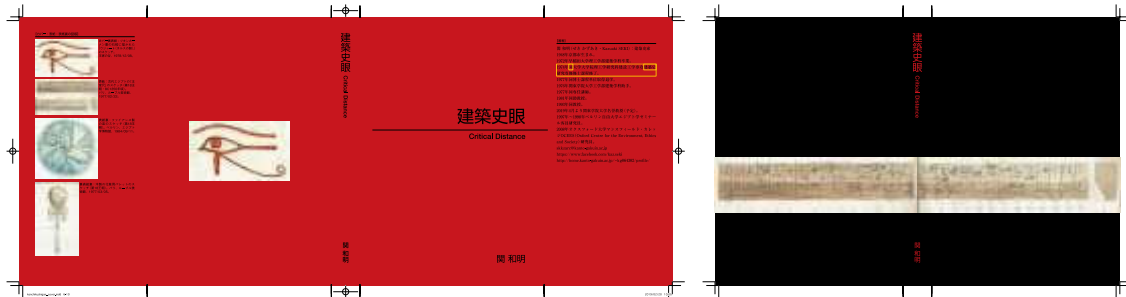


Fig. 1. “Critical Distance” cover



Fig. 2. Exhibition Catalogue of “Prospective Landscapes: A Retrospective”

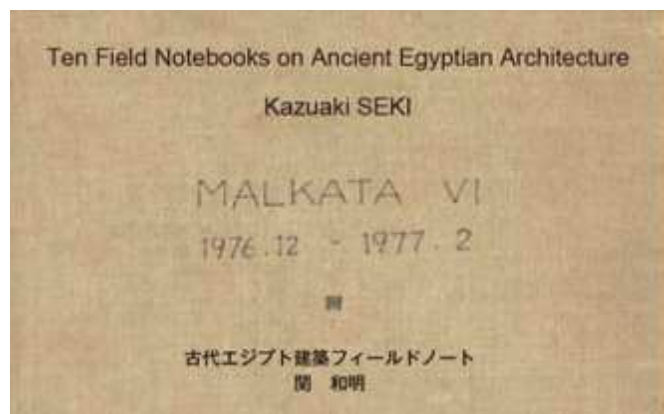


Fig. 3. “Ten Field Notebooks on Ancient Egyptian Architecture”



*Fig. 4. "Licht Kugel" in Smart Illumination Yokohama 2018*

*Fig. 5. "Waku Waku Lantern" in Smart Illumination Yokohama 2018*



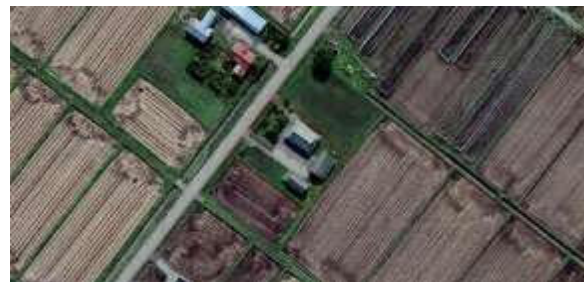
*Fig. 6. Prospect Landscapes: A Retrospective-Drawing Exhibition 'Vortex'*

*Fig. 7. "Luminous Jungle Gym" in Smart Illumination Yokohama 2019*



*Fig. 8. "Photograph and Architecture" in August 2018*

*Fig. 9. "Fuyu no Akari: Light in Winter" in February 2019*



*Fig. 10. "Tea Room" in September 2019*

*Fig. 11. Site of Higashikawa-ni-Go project*

**Кадзуаки Сёки**

*skkzarc@kanto-gakuin.ac.jp / kaz-seki@wg8.so-net.ne.jp*

KGU, Yokohama, Japan

### **ТРИ КНИГИ, ВЫСТАВКИ, ВОРКШОПЫ И ПРОГРАММА ПОСЛЕДНИХ МЕРОПРИЯТИЙ 2018/2019**

*Абстракт.* Этот доклад рассказывает о моих последних действиях в 2018 и 2019 годах. Мною было опубликовано три книги. Первая названа “Критическое расстояние” (建築史眼). Это антология научных статей и критических эссе по искусству, дизайну и архитектуре. Моя вторая книга названа “Будущее ландшафтного дизайна: ретроспектива”. Это каталог выставки рисунков “Вортекс” ландшафтного архитектора Рёко Уэяма. И, наконец, третья книга названа “Десять полевых тетрадей по древнеегипетской архитектуре”. Это собрание конспектов моих полевых записей по архитектуре Древнего Египта. Также я провел три выставки, а также воркшопы в Йокогаме и на Хоккайдо, соответственно. В настоящее время мне поручен проект в Хигашикаве, Хоккайдо.

*Ключевые слова.* история и критика в архитектуре и дизайне, воркшоп, публикации и выставки, художники-резиденты, БанкАРТ 1929, проект в Хигашикаве, Хоккайдо.